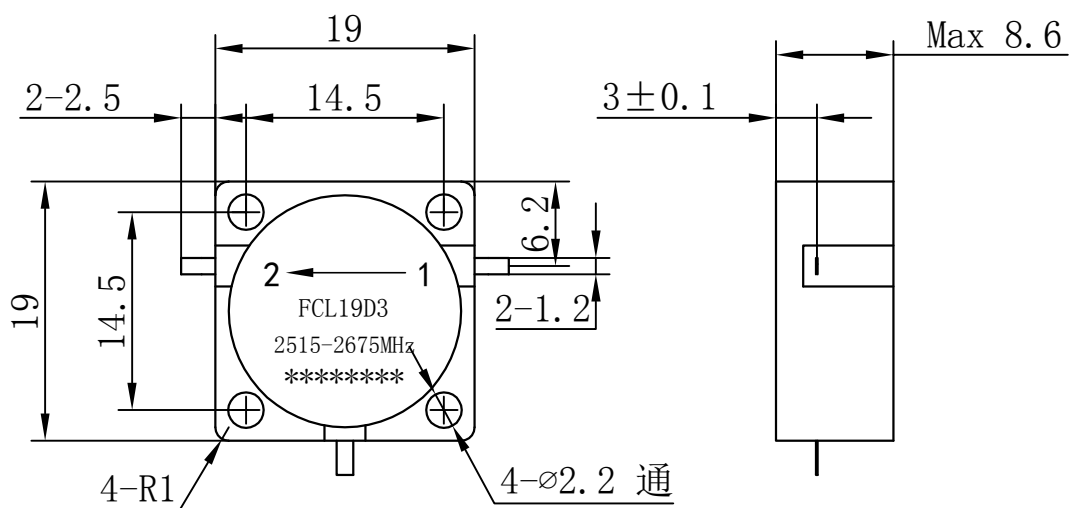




Drop-in Circulator

FCL19D3 2515-2675MHz



Note:

- 1.Tolerances:  $\pm 0.20\text{mm}$
- 2.Material  
BODY: Steel  
TAB: BeCu
- 3.Surface Treatment  
BODY: Nickel plate  
TAB: Silver Plated

Item	Unit	Specification	Note
Freq.Range	MHz	2515-2675	
Direction		CCW/Left	
Operating Temperature	°C	-40~+85	
Insertion Loss	dB max	0.25	Room Temp (+25°C±10°C)
	dB max	0.30	Over Temp (-40°C~+85°C)
Isolation	dB min	25	Room Temp (+25°C±10)
	dB min	22	Over Temp (-40°C~+85°C)
Return Loss	dB min	25	Room Temp (+25°C±10)
	dB min	22	Over Temp (-40°C~+85°C)
Avg Power	W	260	
Peak Power	W	1000	
Impedance	$\Omega$	50	

Customer suggestion and confirmation:

Signature:

Date:

Design: Colin

Format    Scale    Version

A4    1:1    A

Date: 2020.3.27

Page 1, Total 1



Unit: mm

www.winnsky.com